



UPRERAPRJ466336/05/2026

<https://www.up-rera.in/>

Sales : +91-782797 9955

Designed for those  
who have outgrown

CHAOS



Two-sided openness.

---

LARGE  
**SUNDECK**

LIFE OF EXPANSE





Every home  
is a corner home





8 feet wide  
Sundeck

A unique layout  
ensures every  
residence opens from  
two sides.





7 homes  
per floor



7 lifts  
to match

# COSMOS CORNER

There comes a time when more no longer feels meaningful.  
When the noise, the rush, the constant need to keep up begins  
to fade and what you seek instead is clarity.

**The Sundeck Life is built for that moment.**

A life where your home doesn't close you in, but opens you out.  
Where space flows from every side, light stays with you through  
the day and your living extends beyond walls into expansive  
sundecks. Here, there are no hierarchies of living. Every home  
follows the same standard, creating a community of equals,  
where connections are effortless and belonging is natural.  
This is not about upgrading your lifestyle. It is about refining it.

Because **COSMOS CORNER** is not an address you move into.

It is a life you grow into.

Experience freedom that comes with ownership

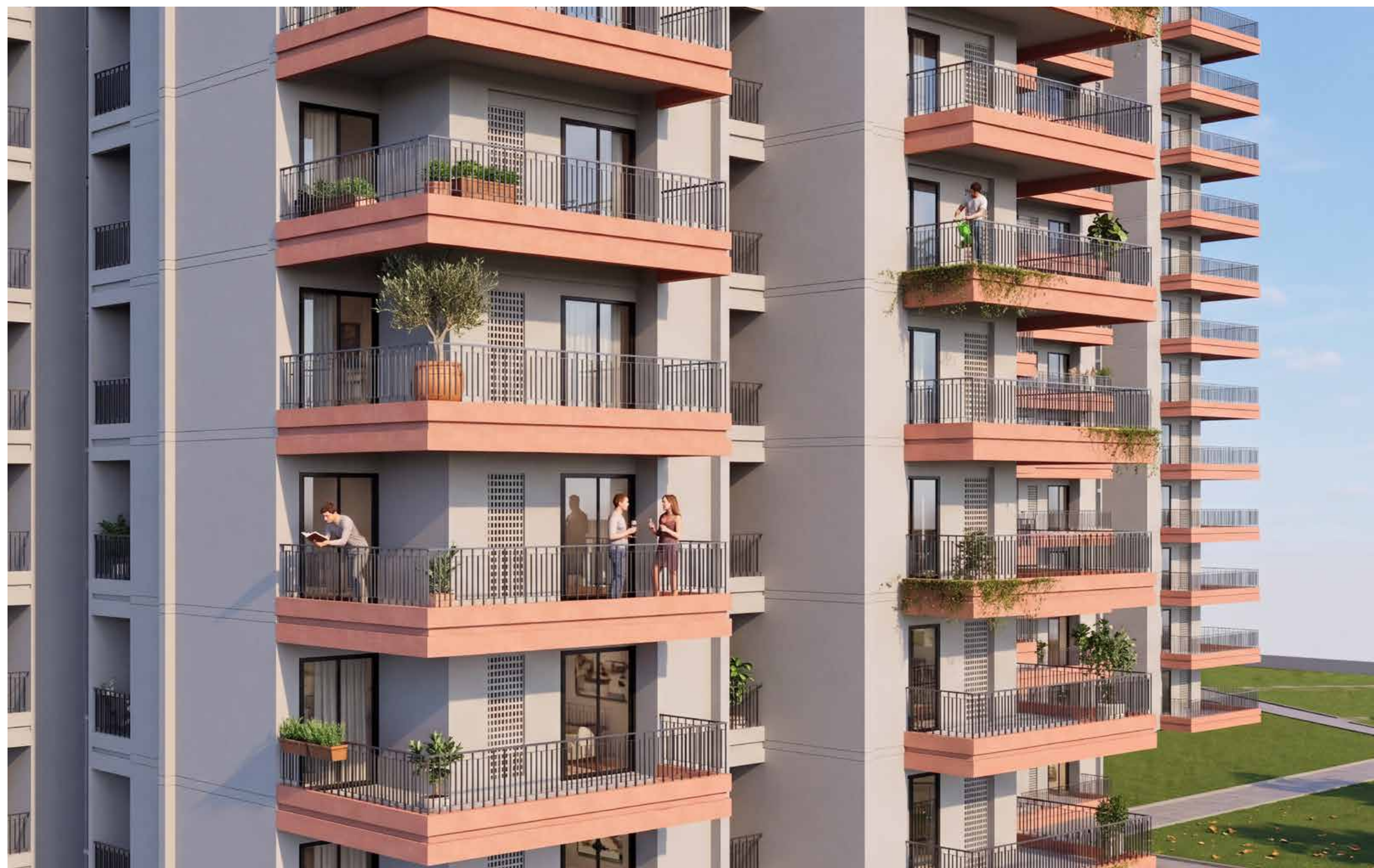


More light, more air, more space





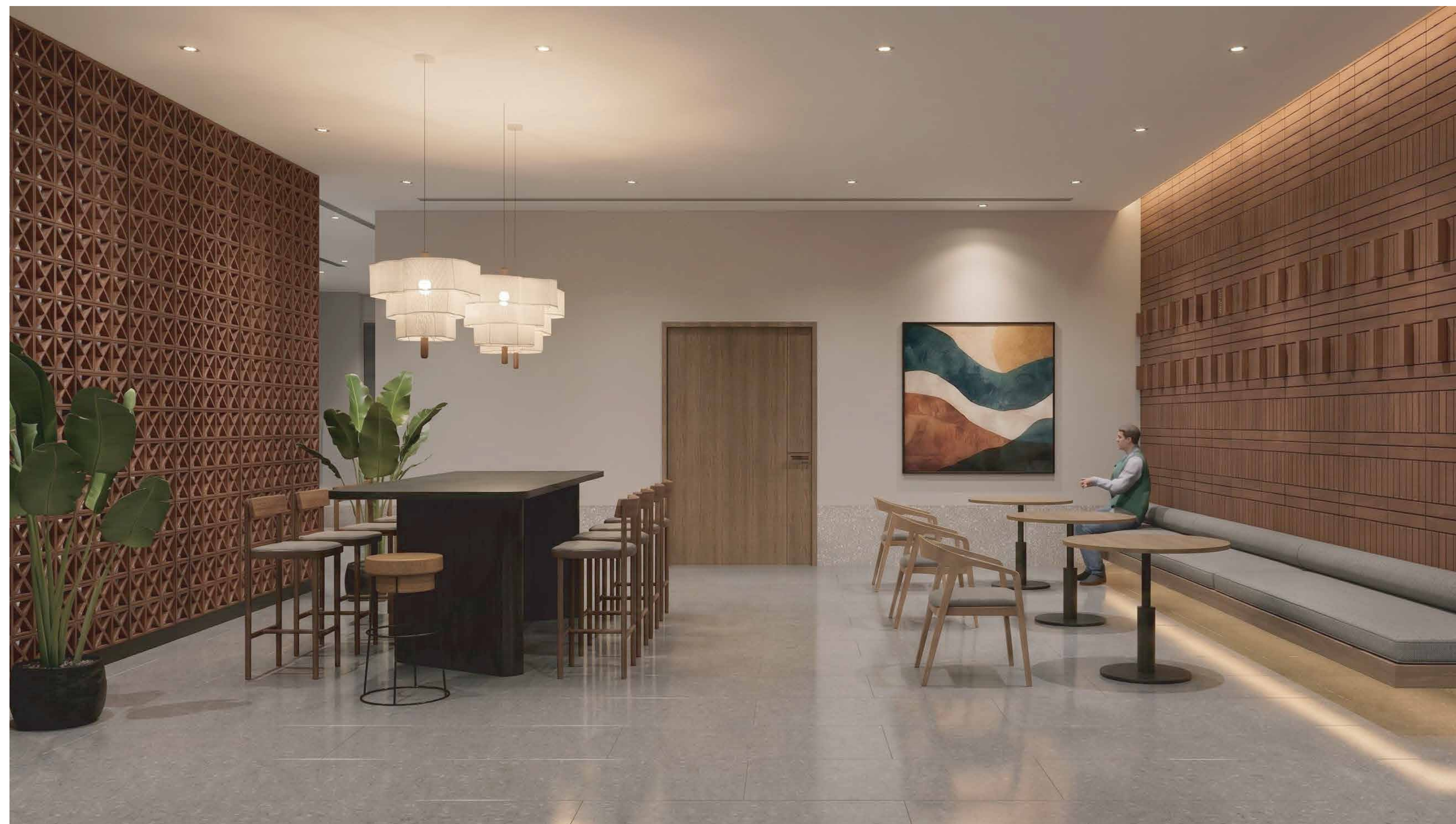
A life that  
echoes silence  
and prosperity



It's not a balcony,  
it's a Sundeck



Homecoming  
was never  
this graceful



A dedicated  
working lounge  
in every tower



A dedicated  
G+2 Club for  
shared living



Share stories,  
laughter and  
celebrations  
while you float  
in grandeur



Life doesn't pause. It expands.

## For You

GYMNASIUM  
OPEN-AIR GYM  
YOGA LAWN  
SWIMMING POOL  
JACUZZI  
CHANGING ROOMS  
PADLE COURT  
POOL TABLE

## For Family

CHILDREN PLAY ZONE  
CRICKET PITCH  
MULTIPLAY COURT  
LAWN  
KIDS PLAY ZONE  
CRECHE  
INDOOR PLAY AREA  
BOARD GAME  
AIR HOCKEY  
TABLE TENNIS  
CARROM  
FOOZEBALL  
VIDEO GAME

## For Living

WORKING LOUNGE  
LIBRARY  
PLAZA  
YOUTH INTERACTION  
POOL SIDE EVENT LAWN  
BANQUET  
PRE FUNCTION AREA

## For Balance

SENIOR CITIZEN ZONE  
FEATURE WALL  
GROVE  
STEPPED PLANTERS  
GROUP CLASSES

## For Everything Else

PETS PARK  
SCULPTURE GARDEN  
DRIVER ROOM  
MAID ROOM

# For You

Gymnasium



Open-air gym



Yoga Lawn

Paddle Court





Swimming pool

Changing Room



Jacuzzi





Table Tennis

Pool Table



# For Family

Children play zone



Kids Play Zone



Cricket Pitch

Creche





Video Games



Multiplay Court



Foosball

## Board Games



Air Hockey

Carrom



# For Living

Working Lounge





Library



Banquet

Youth Interaction



Pool Side  
Event lawn



Pre-Function area



Plaza

# For Balance

Senior Citizen Zone



Stepped Planters



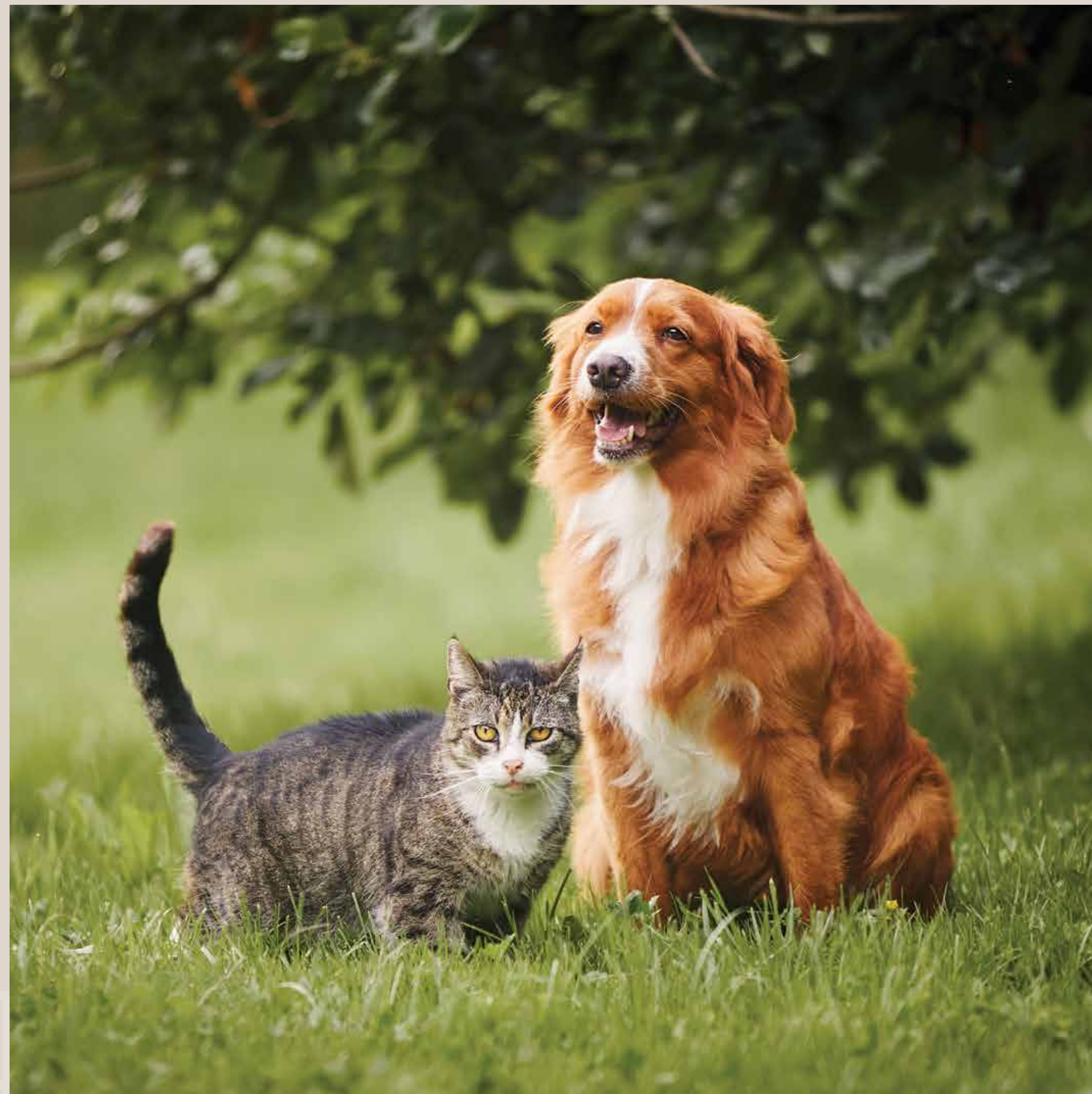
Feature Wall

Grove



# For Everything Else

Pets park





Driver Room



Sculpture Garden



Maid Room

# The COSMOS Advantage


- St. ANDREWS WORLD SCHOOL ●
- DPS SCHOOL ●
- GAURS INTERNATIONAL SCHOOL ●
- NOIDA ELECTRONIC CITY NOIDA ●
- SHAHEED STHAL METRO STATION ●
- GAZIABAD STATION ●
- NORTH INDIA MALL ●
- THE OPULENT MALL ●
- GAUR CENTRAL MALL ●
- YASHODA MEDICITY ●
- SANTOSH HOSPITAL ●
- SJM MULTI SPECIALITY HOSPITAL ●
- WAVE CINEMAS ●
- PVR GHAZIABAD OPULANT MALL ●






# Distance from COSMOS CORNER

 Approx **25-30min(via DME)**  
Central Delhi  
(CP/Connaught Place)

 Approx **50-60min**  
Indira Gandhi  
International(IGI) Airport

 Approx **45min**  
Meerut  
(Partapur/Modipuram)

 Approx **12min**  
Akshardham  
(Delhi Entry)

 Approx **06min**  
Noida Sector 62  
(Electronic City)

# A home that finally makes sense.

In a market where ownership feels out of reach,  
The Sundeck Life brings it back within logic.



**COSMOS REIT**

AU - A001, WTC, Nauroji Nagar , Ring road, New Delhi



UPRERAPRJ466336/05/2026  
<https://www.up-rera.in/>

The advertisement is purely conceptual and constitutes no legal offering. The viewer /prospective buyer may seek all information including sanctioned plans, approvals, development schedule, time of delivery, specifications, facilities, amenities & scheme details from the company in respect of the concerned project/phase that he/she may be interested in, before any such booking/registration, etc. Further, details of the project(s)/ phase are available on the website of U.P. RERA(www.up-rera.in). Collection Account For Cosmos Corner, Axis Bank 926020014501871, Indrapuram Branch, Ghazabad, IFS: UTIB0000636. All material selections will be as per approval of the developer and his consultants. Images used are perspective views and do not constitute any legal offering. The text used is purely conceptual and does not constitute any legal offering. \*Terms & Conditions Apply-Base Selling Price. All material selections will be as per approval of the developer and his consultants.